

PART OF THE SW. 1/4, OF SECTION 12, T.6N., R.3W., S.L.B. & M.

188

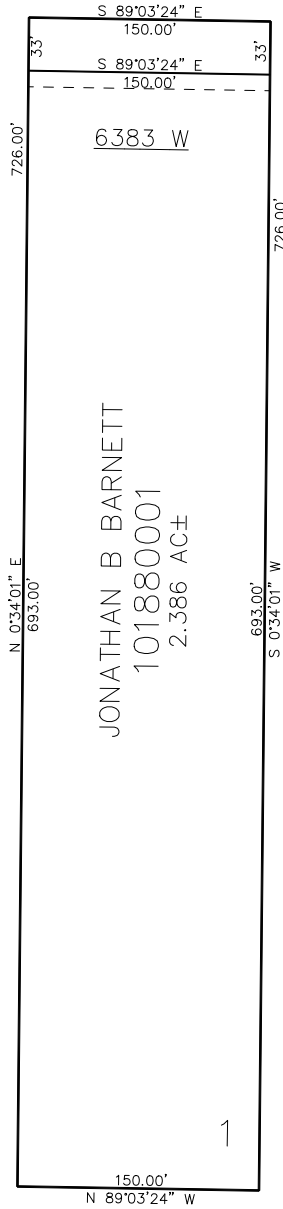
BARNETT SUBDIVISION

IN WEBER COUNTY

TAXING UNIT: 303

SCALE 1" = 60'

700 NORTH



SEE PAGE 34

SEE PAGE 34

10' UTILITY & DRAINAGE EASEMENTS EACH
SIDE OF PROPERTY LINES AS INDICATED
BY DASHED LINES EXCEPT AS OTHERWISE
SHOWN.

FOR COMPLETE SURVEY DATA SEE
ORIGINAL DEDICATION PLAT IN
BOOK 93, PAGE 90 OF RECORDS.